



TKL PUMPS PROVIDE BOOST FOR NEW SOUTH WALES

IN THE SOUTHERN AREA OF CRONULLA, LARGE VERTICAL TKL PUMPING UNITS BOOST THE FLOW OF EFFLUENT FROM STATION SPS 391 TO THE OCEAN OUTLET AT CRONULLA, SYDNEY.

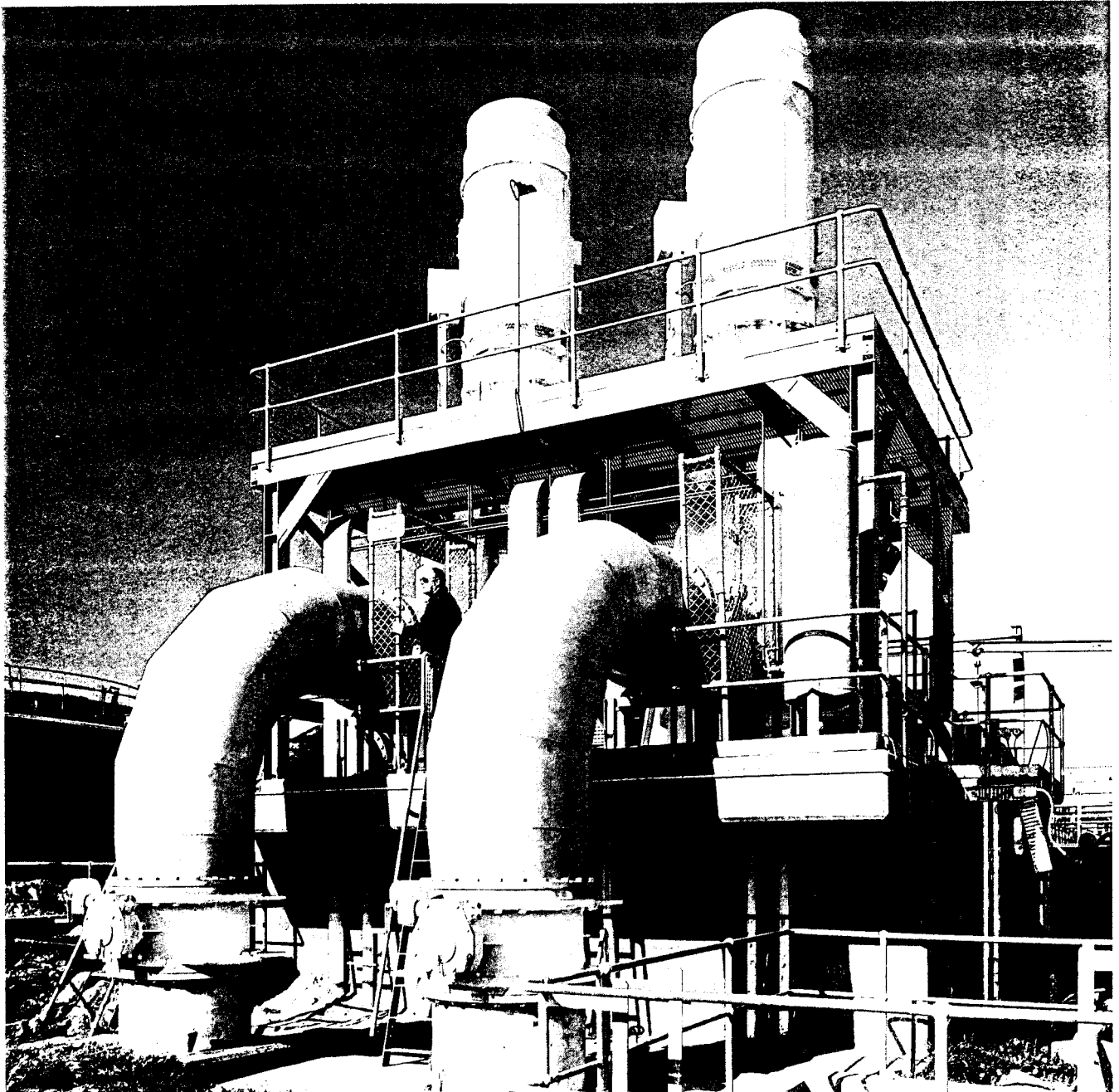
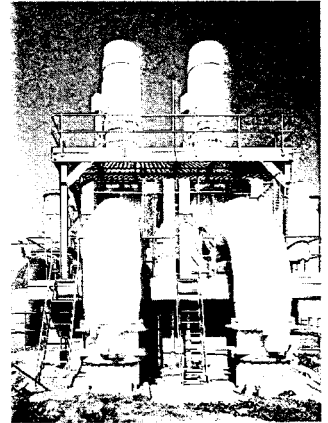
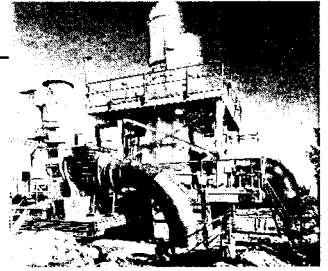
The Cronulla Water Purification Control Plant (WPCP) reports that the two TKL 1000MFD vertical pumping units, supplied in 1987 have given satisfactory operation since installed.

Designed for parallel operation, each of the pumping units has an individual capacity of 2300 litres per second at minimum speed, to 3750 litres per second at maximum speed. When running in parallel, the two pumps can achieve a total output of 5500 litres per second at a 34 metre head. The pumps are driven through variable speed fluid couplings by 1350 kW, 11 kV, 565 r/min electric motors.

Their main function is to boost the flow of treated effluent from the WPCP to the ocean outfall, when the flow from the WPCP exceeds the gravitational flow capacity of the effluent mains.

PROJECT: Cronulla Water Purification Control Plant (WPCP), Sydney

CLIENT: Sydney Water Board





BETTER WATER FOR SOUTH AUSTRALIA

SPECIALY DESIGNED TKL MIXED FLOW DIFFUSER PUMPS ARE A KEY COMPONENT OF ADELAIDE'S HAPPY VALLEY WATER FILTRATION PLANT WHICH WAS OFFICIALLY OPENED IN NOVEMBER 1989.

The new TKL pumps, designed from a model which our R&D Department spent several years developing, successfully combine increased efficiency and low shut-valve power requirement. The four large TKL raw-water and two smaller wash-water pumps were manufactured at

Castlemaine for the pumping plant at Happy Valley. They were commissioned in November 1989.

The contract provided Adelaide with some of its biggest single installation pumping capacity and was a vital link in improving the quality of the city's water supply.

The four raw-water TKL 1200-70MFD single-stage pumps are capable of a maximum flow of 3280 litres per second and a minimum of 1750 litres per second. The wet end, shaft and column are made of AISI316 stainless steel.

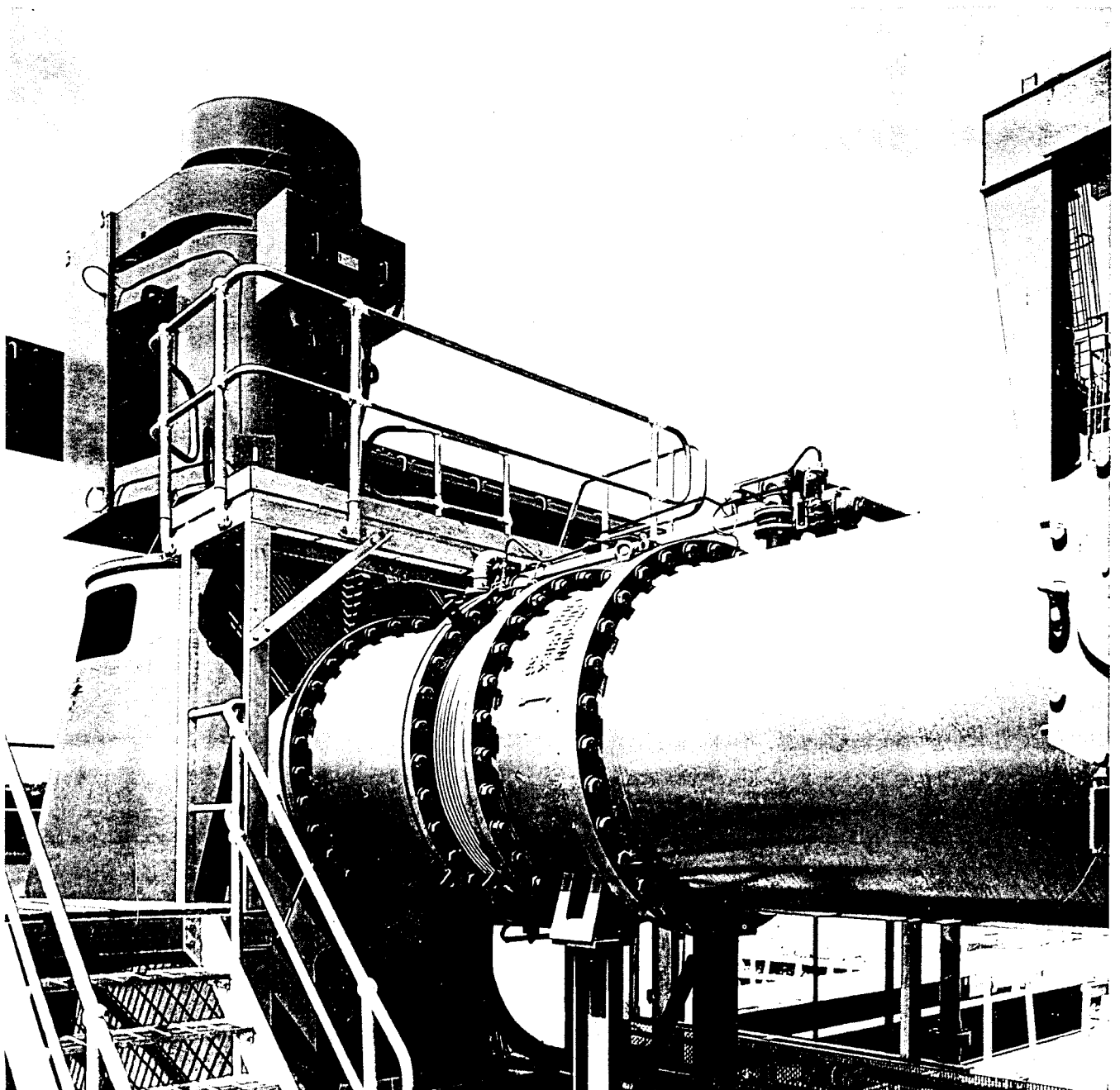
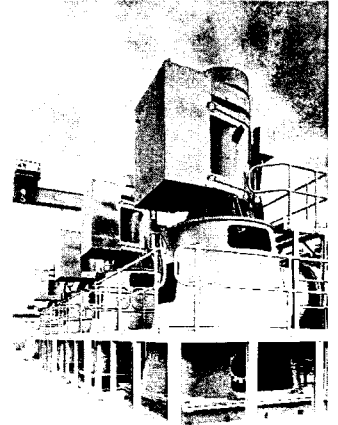
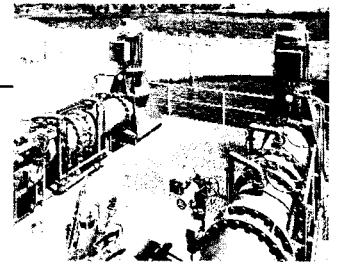
The pumps, which deliver

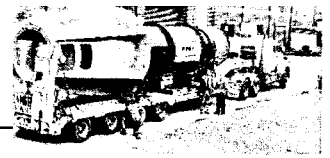
reservoir water to a flocculation tank, provide optimum performance in under-discharge conditions where the head of water and required power are reduced.

The two smaller TKL 750-70MFD single-stage pumps are for wash-water return and have a rated flow of 1000 litres per second. The wet end is phosphor bronze, the shaft and column AISI316 stainless steel.

PROJECT: Happy Valley Water Filtration Plant, Adelaide

CLIENT: F.R. Mayfield





QUEENSLAND PUMPS ENSURE WATER SUPPLIES

TWO LARGE TKL VERTICAL PUMPS ARE NOW PLAYING THEIR PART IN ENSURING WATER SUPPLIES FOR BRISBANE.

The two TKL 1800MFD pumps each have a mass of 26.5 tonnes and were manufactured in a record time of just 16 months from design to job assembly.

They have been installed at the Brisbane City Council's reservoir at Camerons Hill, some 40 km from the city. The reservoir has been built to feed additional potable water via trunk lines from the existing, adjacent Mt. Crosby reservoir.

When Mt. Crosby becomes low, the two pumps will boost the main trunk line pressure by adding water from the Camerons Hill reservoir.

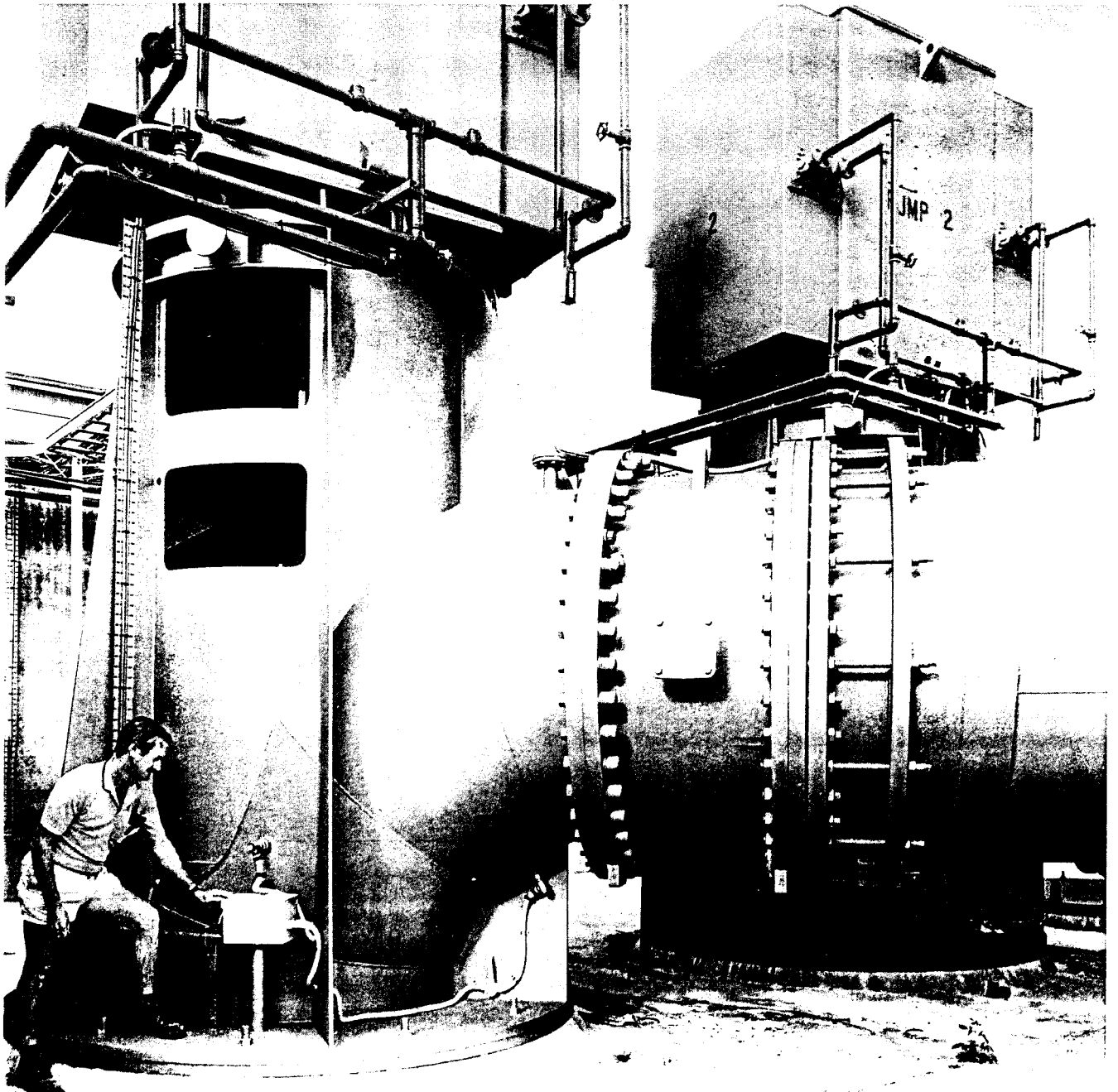
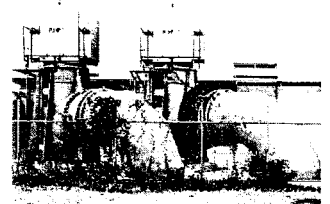
The Brisbane City Council has set out to ensure that there is sufficient water to meet the demands of both the city and its surrounding shires for at least the next

20 years.

For the record, the large pumps are TKL 1800MFD vertical single stage units, each with a capacity of 8300 litres per second at a 19 metre head. The pumps are driven by 1800 kW, 425 r/min electric motors.

PROJECT: Camerons Hill Booster Station, Brisbane

CLIENT: Brisbane City Council





**Thompsons
Kelly & Lewis**

CONDENSATE EXTRACTION PUMPS FOR QUEENSLAND POWER STATIONS

**A CLOSE ASSOCIATION
WITH QUEENSLAND
POWER AUTHORITIES
HAS SEEN TKL MEET
MULTI-MILLION DOLLAR
ORDERS FOR THE
SUPPLY OF
CONDENSATE
EXTRACTION PUMPS
FOR THE TARONG,
CALLIDE AND STANWELL
POWER STATIONS.**

TKL has dominated the supply of condensate extraction pumps to Queensland power stations, having units installed at Gladstone, eight at Tarong, four at Callide and eight at Stanwell.

The Stanwell pumps are featured here. The TKL 550/300x3stage condensate extraction pumps are vertical multistage, re-entry pot types.

The submerged first stage has a double suction impeller discharging into a double volute casing through a trouser leg branch into the discharge column.

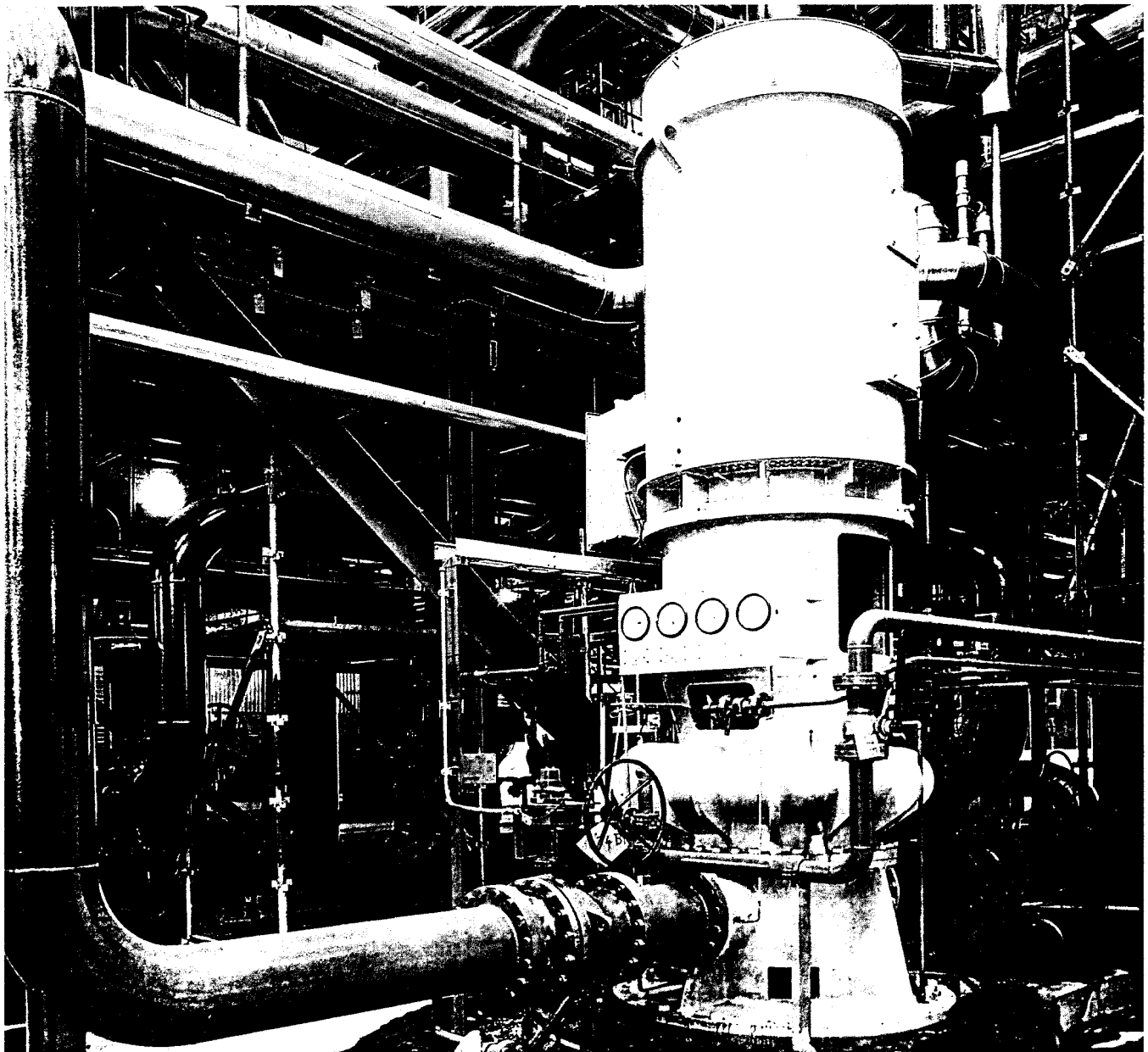
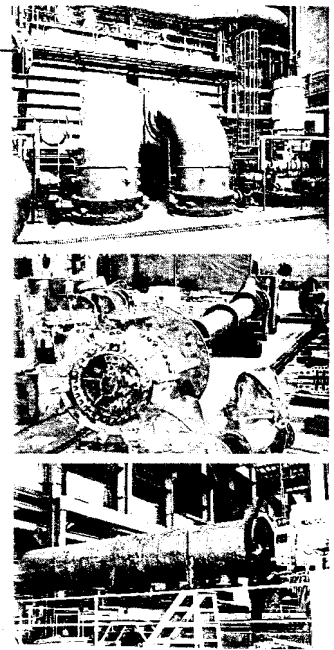
Second and third stage are single suction impellers discharging through radial vane diffusers into a final single volute discharge branch. Condensate leave

the pump at maximum pressure to go to the L.P. heaters and de-aerator.

Two pumps are provided for each 350 MW turbo generator, and are rated at 335 litres per second at 214 metres differential head.

Each pump is driven by an 1100 kW, 6.6 kV, 1450 r/min electric motor, and has a physical size of 1400 mm in diameter, 7.6 meters long and a mass of 17 tonnes.

PROJECT: Tarong,
Callide and
Stanwell Power
Stations





**Thompsons
Kelly & Lewis**

MORE SALT FROM WESTERN AUSTRALIA

THE MINERAL WHICH IS USED IN THE GREATEST QUANTITIES AND MOST APPLICATIONS IS MINED AND PROCESSED IN WESTERN AUSTRALIA. IT IS SODIUM CHLORIDE, OR SALT.

Leslie Salt company installed an additional two TKL 1375AFD vertical axial flow pumps at their Port Hedland operations.

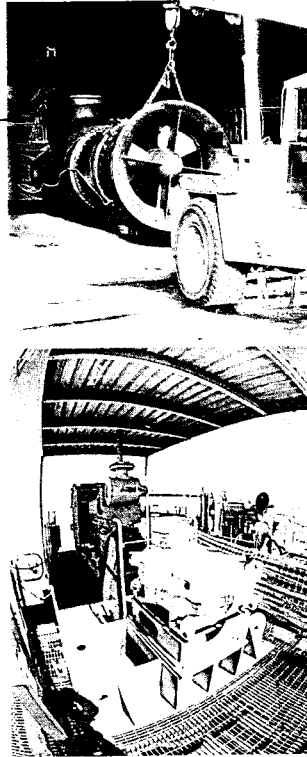
The two pumps are used as seawater intake units and pump from a tidal creek into a concentration pond system at the Port Hedland solar salt operation. They are diesel engine driven through right-angle gearboxes and operate up to

14 hours a day, depending upon tidal conditions. In any given hour they are operating, the pumps will be able to transfer 30 Million litres per hour - equivalent to 150,000 200 litre drums of water.

The Leslie Salt company is a division of Cargill Australia Limited. With the new pumps, they expect to increase production to 2,750,000 tonnes a year.

PROJECT: Leslie Salt Company, Port Hedland, Western Australia

CLIENT: Cargill Australia Limited



**Thompsons,
Kelly & Lewis Pty. Ltd.**

A.C.N. 004 249 012

26 Faigh Street
Mulgrave Victoria 3170
Australia

Telephone: +61 3 9562 0744
Facsimile: +61 3 9562 2816

E-mail: tkl.sales@tkl.com.au
Internet: www.tkl.com.au

For further information, sales, service or technical assistance, consult your telephone directory for nearest sales office:

AUSTRALIA Sydney Melbourne
Brisbane Adelaide Perth
NEW ZEALAND Auckland
Christchurch Hamilton
EAST ASIA Singapore

