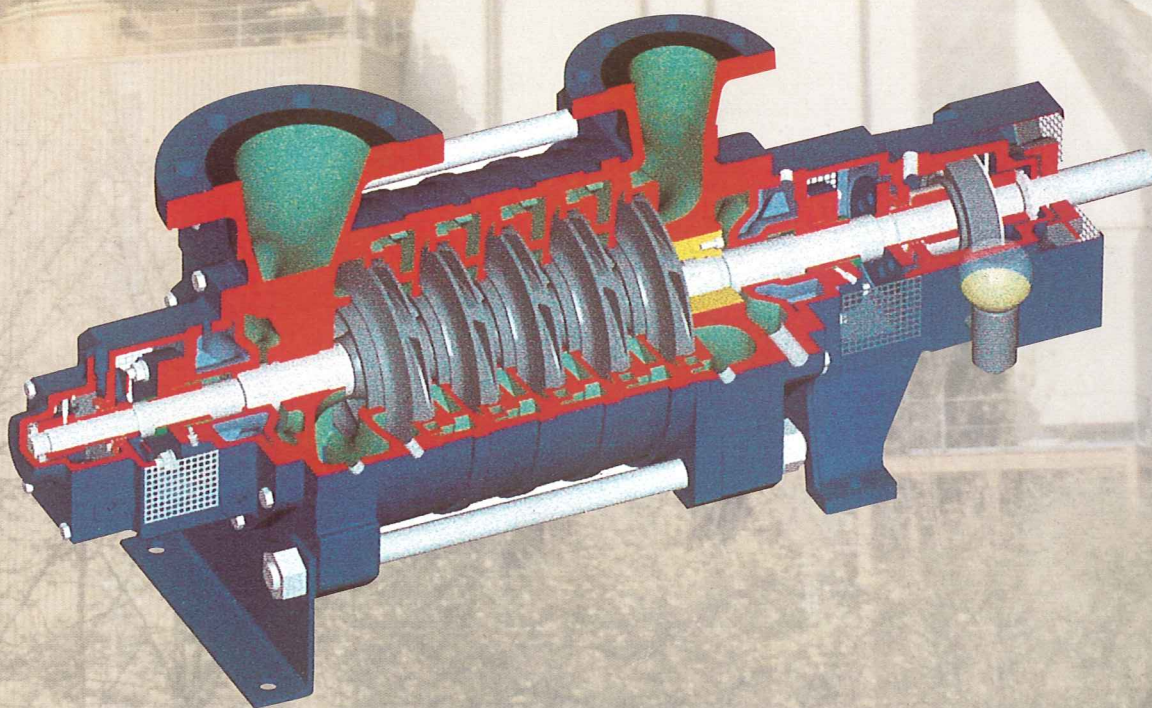


ID Ingersoll-Dresser Pumps

WDX

Multistage, Ring Section Pumps



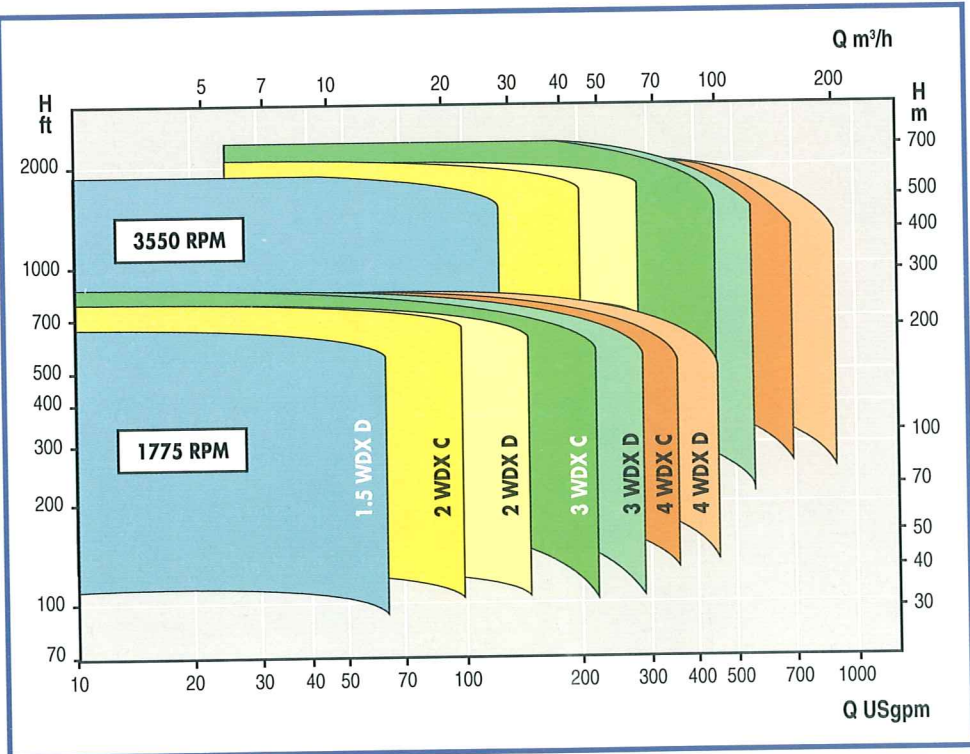
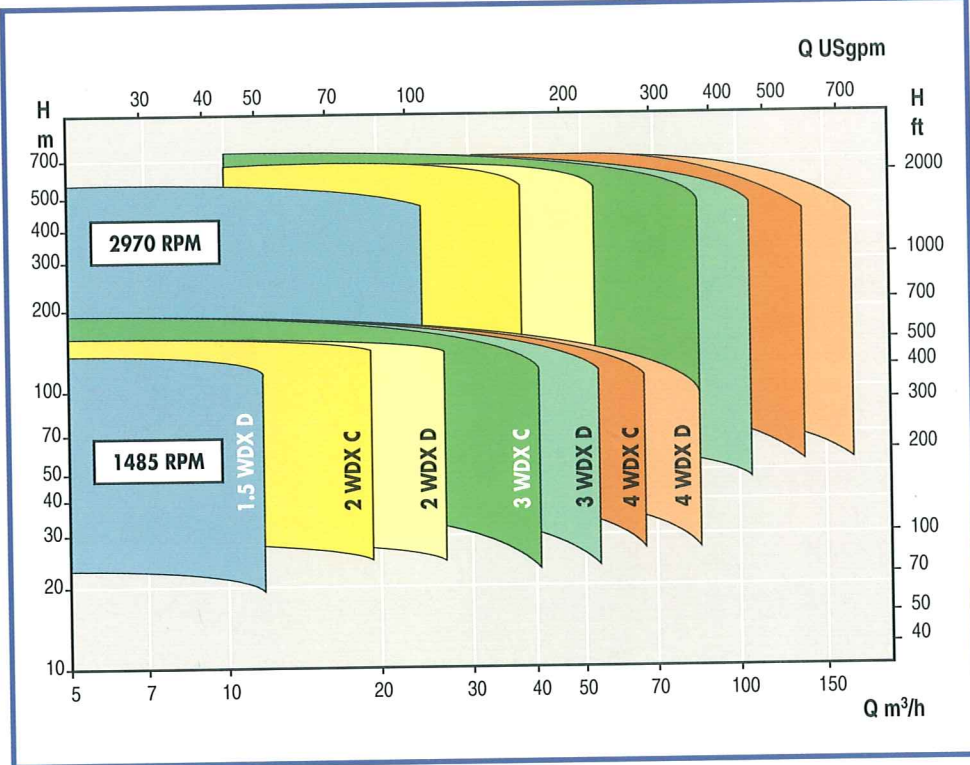
WDX - Operating Range

Operating Limits

Capacity at 50 cycle up to	660 US gpm	160 m ³ /h
Capacity at 60 cycle up to	800 US gpm	190 m ³ /h
Suction pressure up to	365 psi	25 bar
Discharge pressure up to	1090 psi	75 bar
Pumping temperature up to	410°F	210°C
Maximum speed	3600 rpm	
Limits, depending on pump size, material column, and temperature		

Typical Applications

- General Industry and OEM**
- Boiler feed
 - Condensate return
 - Brackish water
 - Pressure boosting
 - High pressure cleaning
 - Car wash systems
 - Snow making
 - Hydrocarbon transfer
 - Chemical end product transfer



Design Features

Description

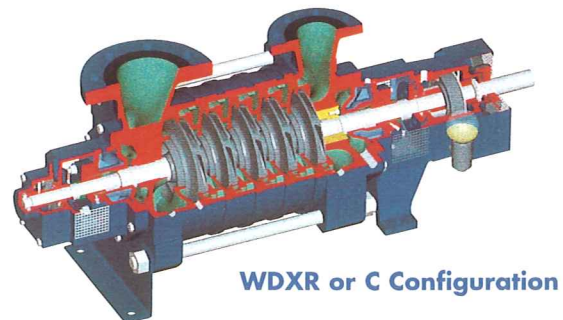
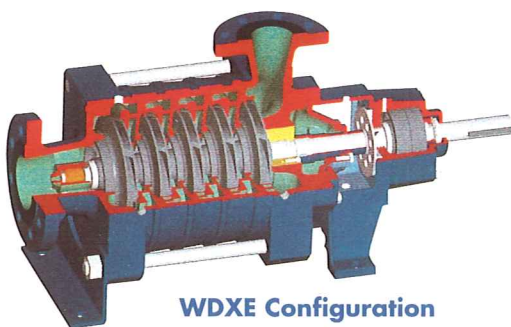
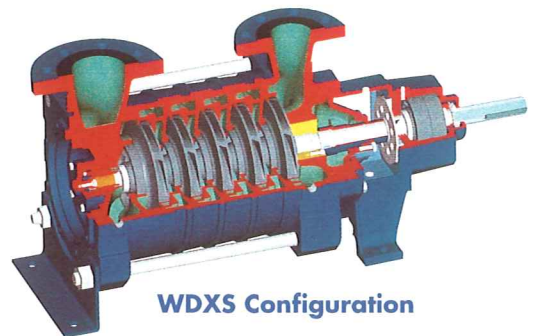
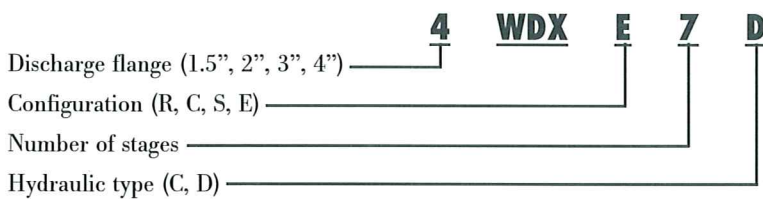
The WDX horizontal ring-section multistage pump is a product of over two centuries of combined pump design experience. Ingersoll-Dresser Pumps designed the WDX to perform on a wide range of high head / low flow applications. The WDX is offered with extensive hydraulic coverage, multiple material options, and a wide range of pump sizes and stages.

The heart of the WDX is the high head-per-stage impeller combined with the precision balance drum. Its compact design together with high efficiency hydraulics provide premium performance with fewer pump stages, resulting in lower installation and operation costs. The precision machined diffusers enhance this efficiency and ensure consistently reliable performance. In addition, the innovative first stage suction impeller allows reliable operation on tough, low NPSH_a applications.

The application flexibility of the WDX is enhanced by its multiple configurations. The WDX is available with both radial suction and end suction arrangements. For additional adaptability, the radial discharge and suction flanges are each rotatable in 90° increments, and are available in both metric and ANSI dimensions.

By offering an extensive selection of materials, the WDX is the choice for most applications. The WDX is offered in Cast Iron, Ductile Iron, Carbon Steel, 12% Chrome Steel, 316 Stainless Steel, and Duplex Stainless Steel.

Nomenclature



Materials of Construction

Parts	Material Column						
	M1	M2	M3	M4	M5	M6	M7
Casing	Cast Iron	Ductile Iron	Carbon Steel	Carbon Steel	12% Cr Steel	SS Duplex	SS 316
Diffuser	Cast Iron	Cast Iron	Cast Iron	SS 316	SS 316	SS 316	SS 316
Impeller	Cast Iron	Cast Iron	Cast Iron	SS 316	SS 316	SS 316	SS 316
Shaft	13% Cr Steel	13% Cr Steel	13% Cr Steel	13% Cr Steel	13% Cr Steel	SS Duplex	SS Duplex
Shaft Sleeve	13% Cr Steel	13% Cr Steel	13% Cr Steel	13% Cr Steel	13% Cr Steel	SS 316	SS 316
Bearing Housing	Cast Iron	Cast Iron	Cast Iron	Cast Iron	Cast Iron	Cast Iron	Cast Iron
Balance Drum	Ductile Iron	Ductile Iron	Ductile Iron	Stainless Steel	Stainless Steel	Stainless Steel	Stainless Steel
Balance Ring	Ductile Iron	Ductile Iron	Ductile Iron	12% Cr Steel	12% Cr Steel	SS 316	SS 316