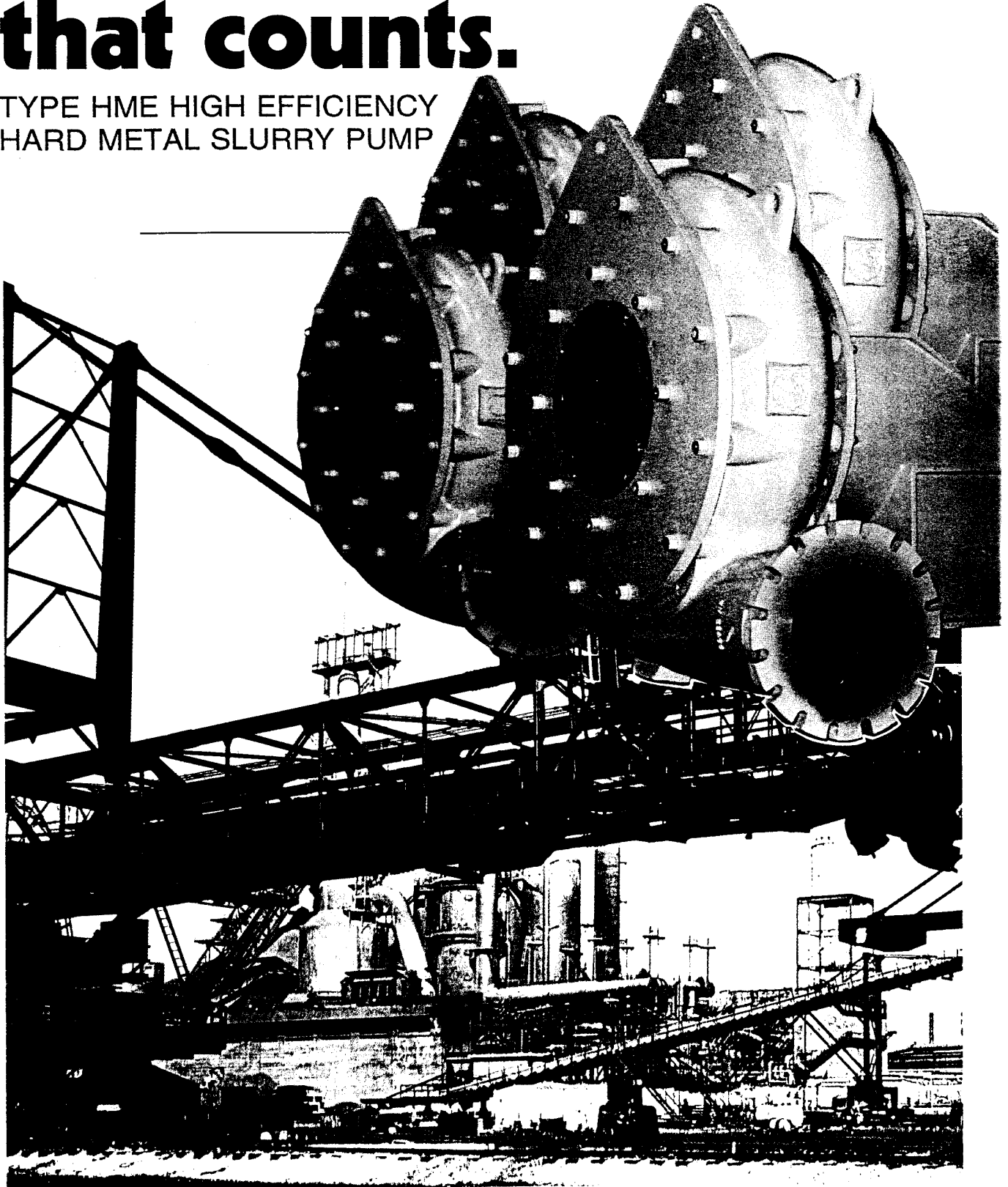
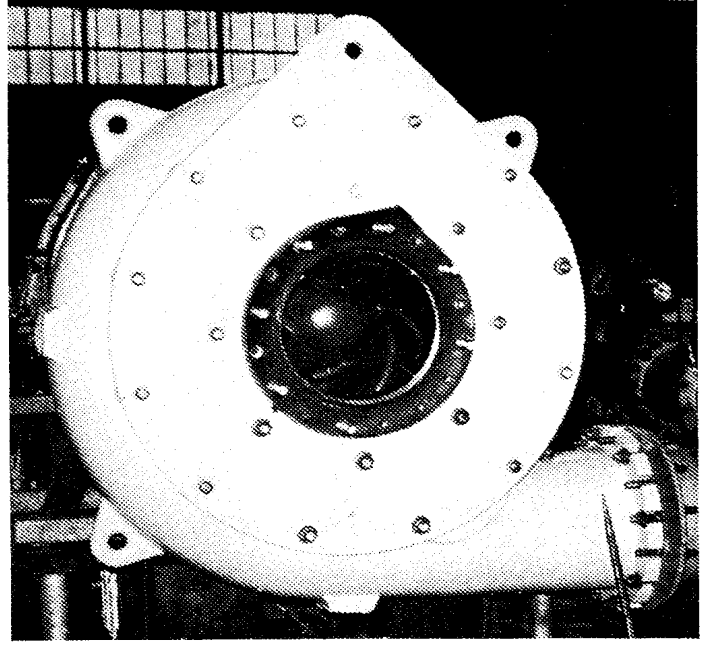
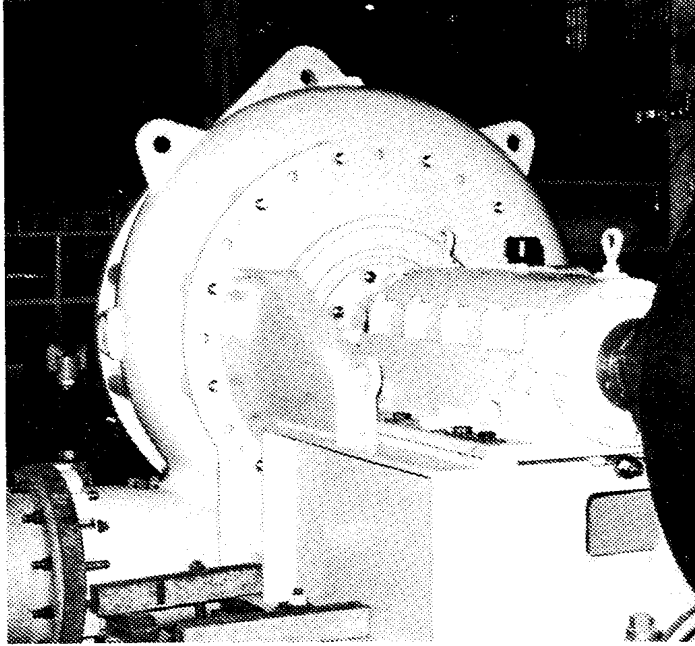


It's the difference that counts.

TYPE HME HIGH EFFICIENCY
HARD METAL SLURRY PUMP





TKL DEVELOPS HIGH EFFICIENCY SLURRY PUMPS

NABALCO (ALUMINA REFINERY) REQUIRED EIGHT NEW SLURRY PUMPS FOR A PLANT UPGRADE BUT, THE SPECIFICATION WRITTEN RESULTED IN CONVENTIONAL SLURRY PUMPS BEING REJECTED DUE TO THEIR LOW EFFICIENCY.

The requirement meant the pumps had to operate with

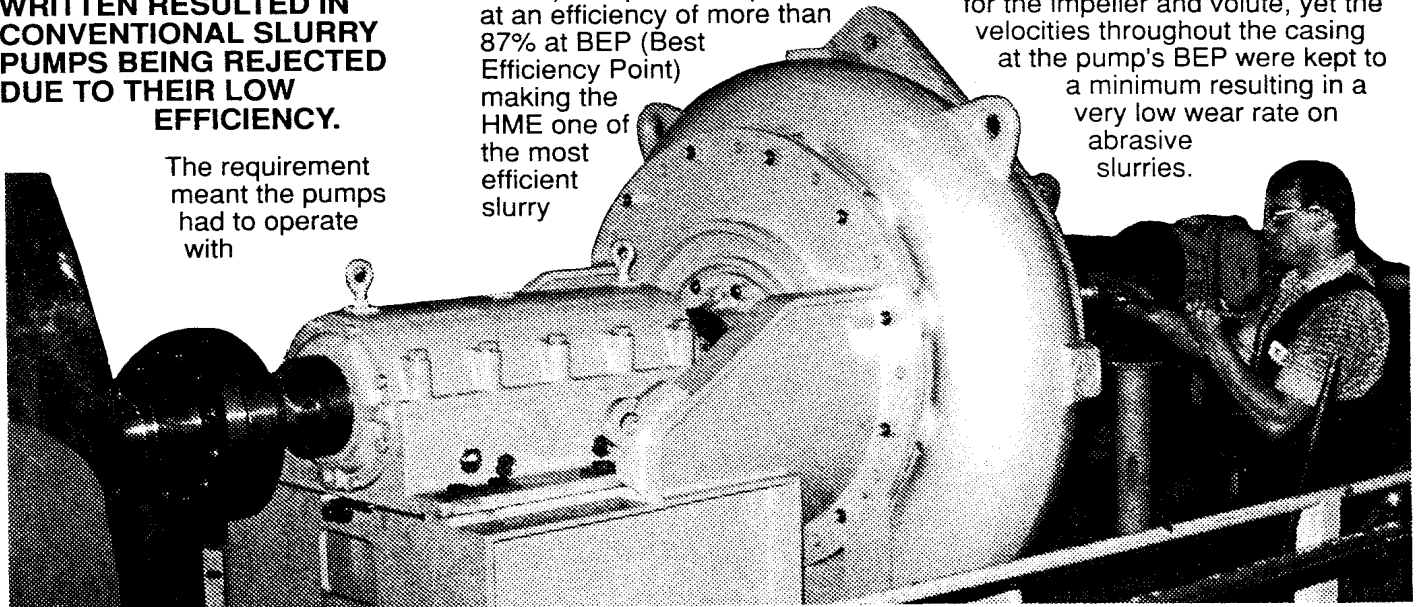
at least 80% efficiency. TKL took the project on and designed a new Hard Metal High Efficiency slurry pump type HME, size 450 x 400 x 990.

The pump was performance tested at TKL's Castlemaine plant (shown below) and proved to perform at an efficiency of more than 87% at BEP (Best Efficiency Point) making the HME one of the most efficient slurry

pumps for that size in the world.

These pumps are now saving Nabalco a substantial amount on power running cost alone.

Contrary to conventional slurry pumps, the HME was designed with a true hydro-dynamic shape for the impeller and volute, yet the velocities throughout the casing at the pump's BEP were kept to a minimum resulting in a very low wear rate on abrasive slurries.



Thompsons, Kelly & Lewis Pty. Ltd.
A.C.N. 004 249 012
26 Faigh Street Mulgrave Victoria 3170
PO Box 160 Springvale Vic 3171 Australia
Tel 03 9562 0744 Fax 03 9562 2816

AUSTRALIA
Sydney 02 748 6386
Melbourne 03 9562 0744
Brisbane 07 3277 9511
Adelaide 08 294 8100
Perth 09 451 6600
NEW ZEALAND
Auckland 09 579 6019
Hamilton 07 849 4248
Christchurch 03 338 0956
SINGAPORE 348 6988