

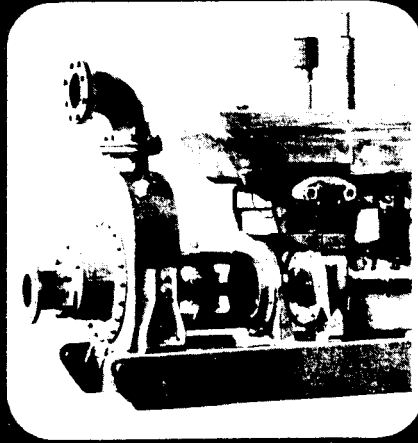
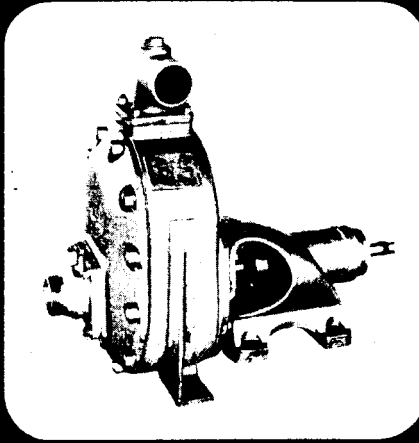
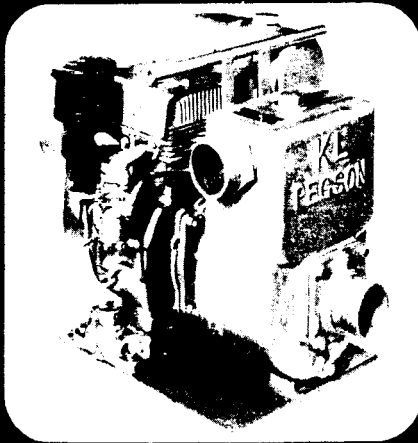
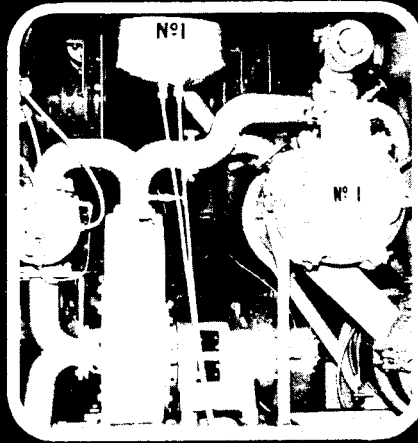
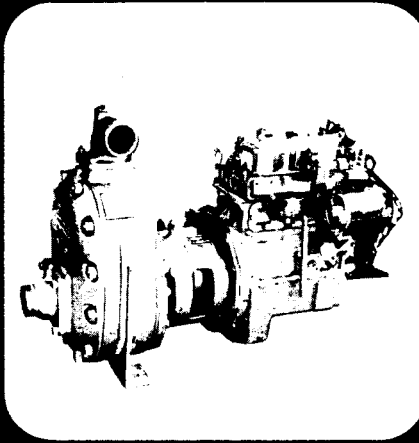
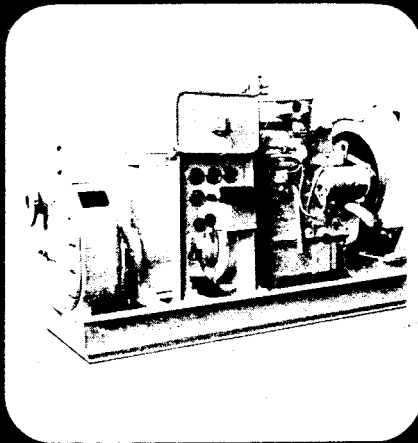
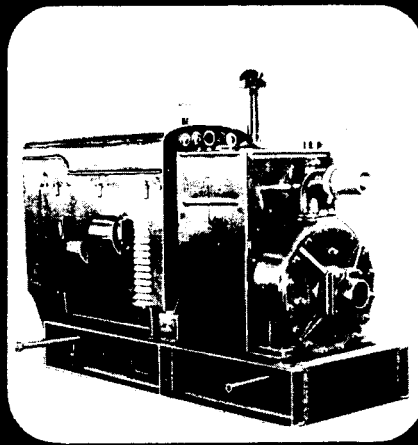
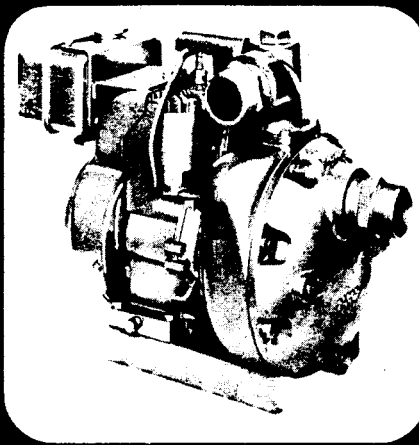
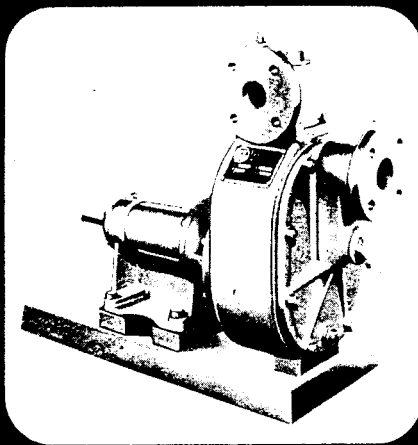


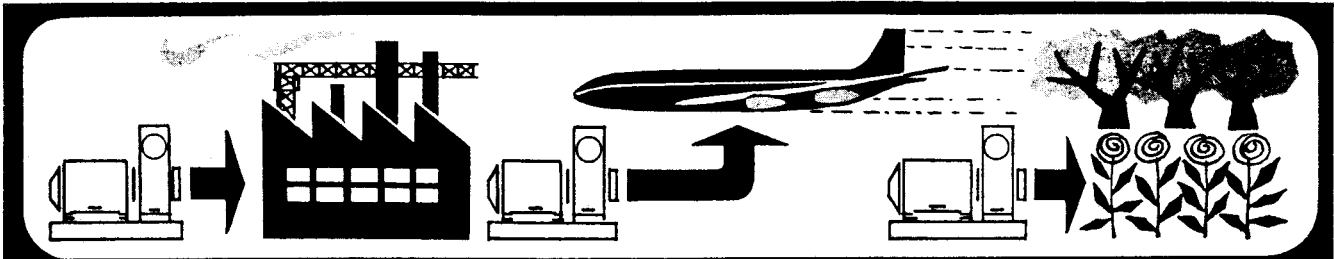
**Thompsons  
Kelly & Lewis**

*Quality*

# TKL PEGSON

Self-Priming  
Centrifugal Pumps

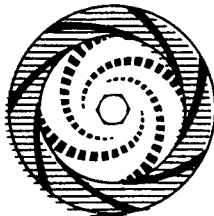




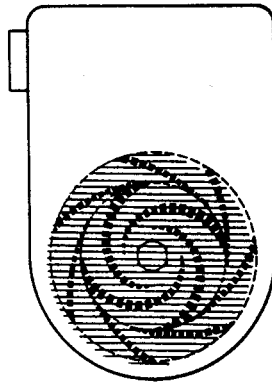
We take an impeller



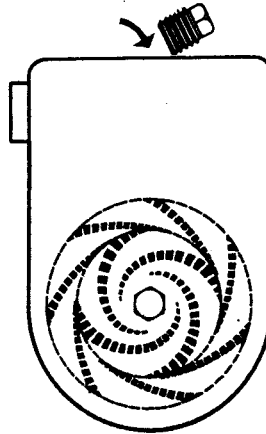
Place a diffuser around it



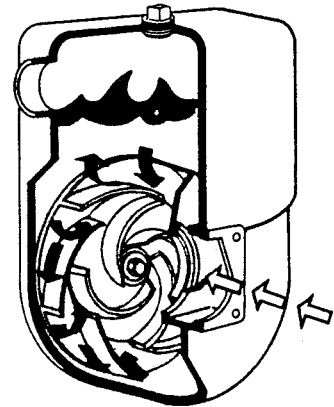
Then place a tank over both



Fill the tank with liquid **ONLY ONCE** when the pump is first installed.



When pump starts, priming is automatic and positive.



**PRIMING**

Impeller throws liquid out into tank and a vacuum is created at the inlet of the impeller.

- ▶ Air from suction line is drawn into impeller and mixes with liquid.
- ▶ Air-liquid mixture is discharged through diffuser passageways.
- ▶ Air rises to surface and is expelled through pump discharge.
- ▶ Liquid returns to impeller tips and mixes with more air.

This priming action continues until all air has been eliminated from suction line.

When suction line is filled, efficient centrifugal pumping commences.

**PUMPING**

The flow of liquid through the many passageways of the exclusive TKL PEGSON diffuser provides complete balancing of radial impeller thrusts, freedom from shaft deflection assures long seal and bearing life.

The range of TKL PEGSON Self-Priming Centrifugal Pumps is extremely wide, and includes sizes from 1½" to 10" with capacities from 50 to 4,000 gallons per minute. Most sizes are available for either low or high pressure duty, and there is a suitable model for most pumping jobs encountered in any branch of industry.

TKL PEGSON Pumps will handle liquids of various viscosities including chemicals, oils and waste and water mixed,

in addition to liquids containing solids. The absence of priming valves, recirculation devices and restricted ports and passages, enables TKL PEGSON Pumps to handle liquids containing up to 25% of solid matter without any tendency to jam or clog, the priming system will work automatically on suction lifts of up to 25 ft. when handling cool, clean, fresh water in normal atmospheric conditions.

**Thompsons, Kelly & Lewis Pty. Ltd.**

A.C.N. 004 249 012  
26 Faigh Street Mulgrave Victoria 3170  
PO Box 160 Springvale Vic 3171 Australia  
Tel 03 9562 0744 Fax 03 9562 2816

**AUSTRALIA**  
Sydney 02 9748 6386  
Melbourne 03 9562 0744  
Brisbane 07 3277 9511  
Adelaide 08 8294 8100  
Perth 08 9451 6600  
**NEW ZEALAND**  
Auckland 09 579 6019  
Hamilton 07 849 4248  
Christchurch 03 338 0956  
SINGAPORE 348 6988